

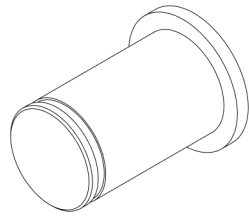
# WALLSLIDE

## WALLSLIDE PARTS CATALOG

### MERCEDES METRIS

### 126" WHEEL BASE





CG1000XL, 1500XL, and 2200XL

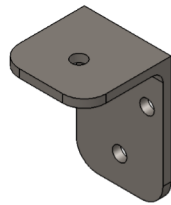
6201 Side Thrust

Bearing Pin

#030280

L-8.29"

D-0.470"



WS-Canopy

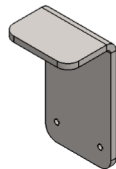
Bumper Mount

#180203

L- 2"

W- 3"

H- 2"



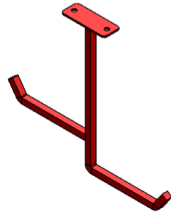
WS-Canopy

Bumper Stop

#180202

L-7"

W-3"



WS-Canopy

Ladder Rack

#180204

L- 4"

W-1-1/2"



WSF-4x6 inch

Base Foot Spacer

#180530

L- 4"

W- 1"



WSF-6 inch

Base Foot Spacer

#180529

L- 6"

W- 1"

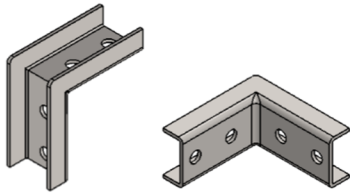


WSF-8 inch  
Base Foot Spacer

#180528

L- 8"

W- 1"

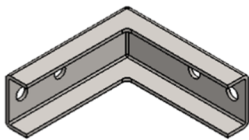


WSF- ClamShells  
2 Way Inside Corner

#180151

L- 3.238"

W- 1.5"

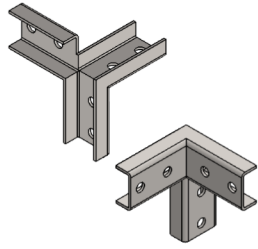


WSF- ClamShells  
2 Way Outside Corner

#180150

L- 4"

W- 1.500"



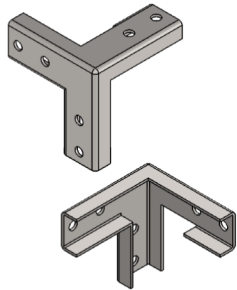
WSF- ClamShells

3 Way Inside Corner

#180153

L- 4"

W- 1.500"



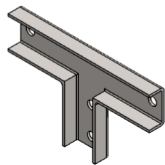
WSF- ClamShells

3 Way Outside Corner

#180152

L- 4"

W- 1.500"



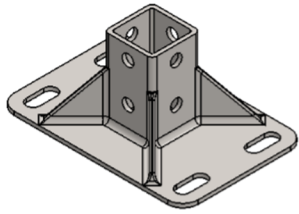
WSF- ClamShells

3 Way Tee

#180154

L- 6.500"

W- 4"



WSF- Frame

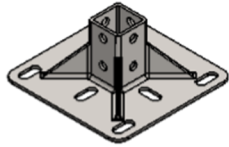
4x6 Base Foot

#180158

L- 4"

W- 6"

H- 2.625"



WSF- Frame

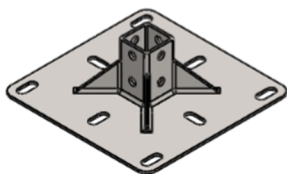
6x6 Base Foot

#180156

L- 6"

W- 6"

H- 2.625"



WSF- Frame

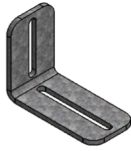
8x8 Base Foot

#180158

L- 8"

W- 8"

H- 2.625"



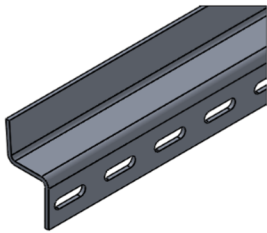
WSF-Frame  
Unistrut Angle Bracket

#180206

L- 4"

W- 2"

H- 3"

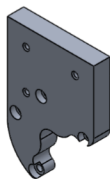


WS-Frame  
Snake Track Extrusion

#180319

L-96"

W-1.380"

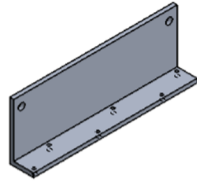


WSM-Bearing Rail  
Motor Mount

#180179

L-5.554"

W-3.976"

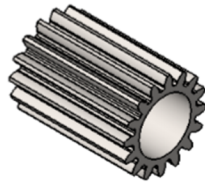


WSM-Bearing Rails  
Limit Switch Mount

#180218

L- 5.125"

W- 1.800"

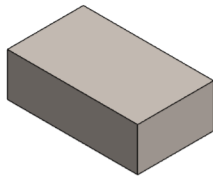


WSM-Motor  
Motor Pinion Gear

#180320

L- 1-1/2"

D- 3/4"



WSR-Rails  
Latch Rod Paddle

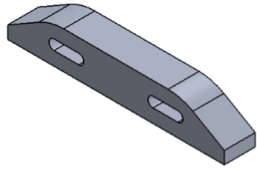
#180313

L-1-1/2"

W-7/8"

H-1/2"





WSM-Rails  
Limit Switch Striker

#180219

L- 4.375"

W- 0.625"

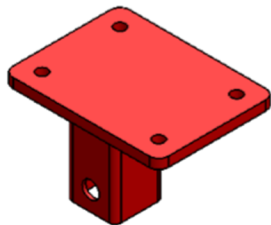


WSP-Acuator  
Connecting Rod

#180518

L- 9.8"

W- 0.188"



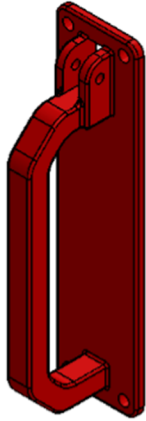
WSP-Canopy  
Handle Bracket

#180214

L- 4"

W- 3"

H- 2"



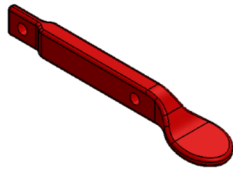
WSP-Handle

Latch Handle Pull

#180317

L- 8"

W- 2"



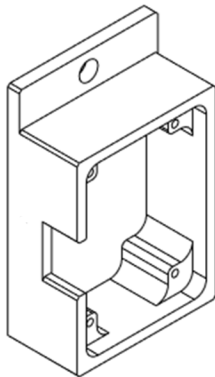
WSP-Handle

Thumb Lever

#180318

L- 4.438"

W- 0.500"



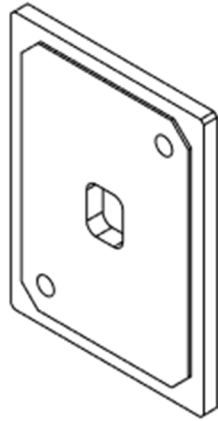
WSP-JSNSR04T

Enclosure Housing

#180330

L- 2.375"

W- 0.750"



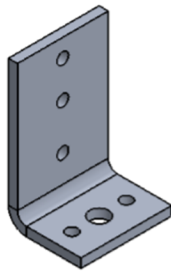
WSP-JSNSR04T

Enclosure Lid

#180331

L- 2"

W- 1.5"



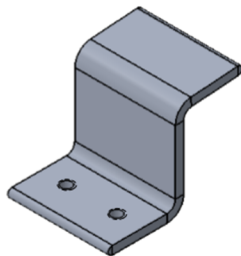
WSP-Snake Track

End Support Bracket

#180216

L- 2"

W- 1.250"



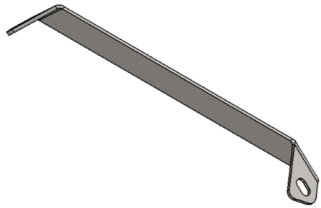
WSP-Snake Track

Single Support

#180314

L- 1.500"

W- 1.500"



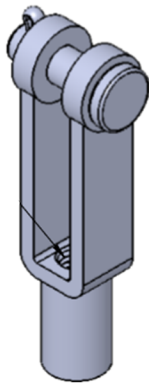
WSP-Wall Sheet

Canopy Bracket

#180205

L- 14.750"

W- 1"



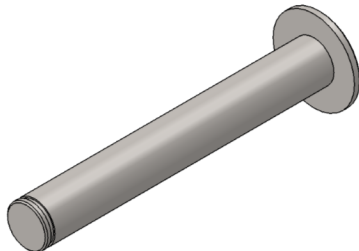
WSP-Wall Sheet

Clevis Rod End

#180322

L- 1.563"

W- 0.438"



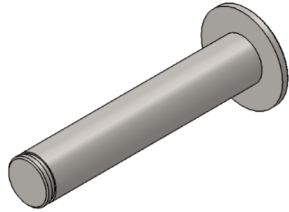
WSR-Bearing Rails

HD Main Bearing Pin

#180193

L- 2.207"

D- 0.310"

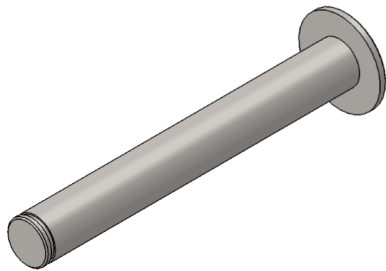


WSR-Bearing Rails-HD  
Single Thrust Bearing Pin

#180196

L- 1.647"

W- 0.310"

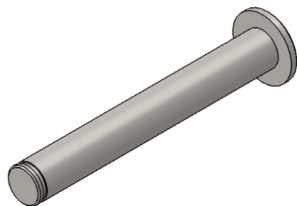


WSR-Bearing Rails  
HD Thrust Bearing Pin

#180194

L- 2.402"

W- 0.310"

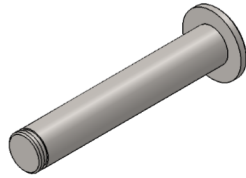


WSR-Bearing Rails  
Main Bearing Pin

#180191

L- 1.835"

D- 0.248"

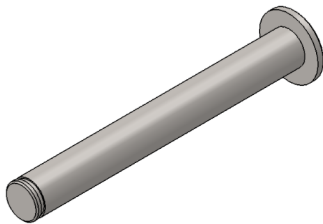


WSR-Bearing Rails  
Single Thrust Bearing Pin

#180195

L- 1.441"

W- 0.248"

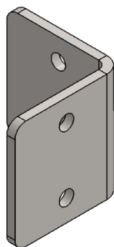


WSR-Bearing Rails  
Thrust Bearing Pin

#180192

L- 2.055"

D- 0.248"

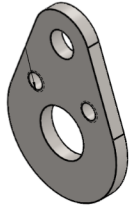


WSR-Rails  
Closure Stop

#180215

L- 2.5"

W- 2.492"



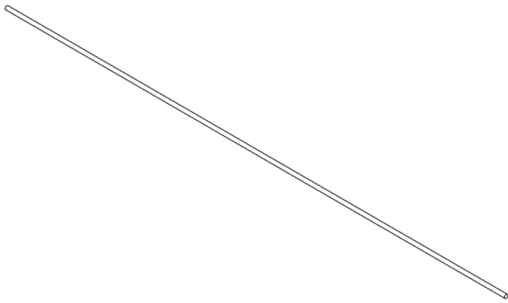
WSR-Rails

Cranklink

#180211

L- 1.821"

W- 0.125"



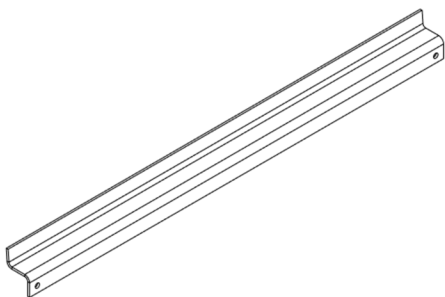
Express Savanna

Canopy Latch Rod

#180513

L- 74"

D-0.500"



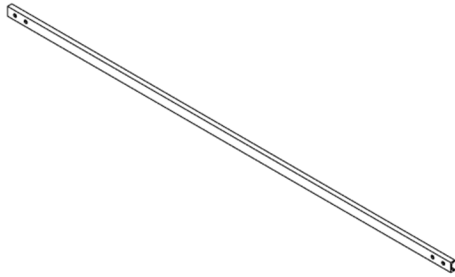
Express Savanna

Snake Track Support

#180661

L- 25.625"

W- 2"



Express Savanna

Spreader Bar

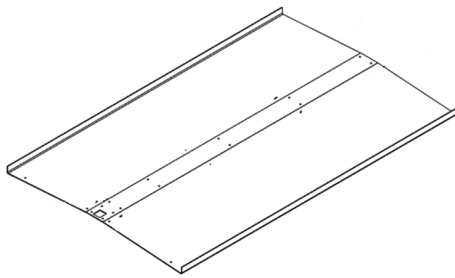
#180656

L- 51.821"

W- 1"

H- 1/2"

Thickness- 1/8"



Express Savanna

Canopy

#180371

L- 73.88"

W- 47"



Express Savanna

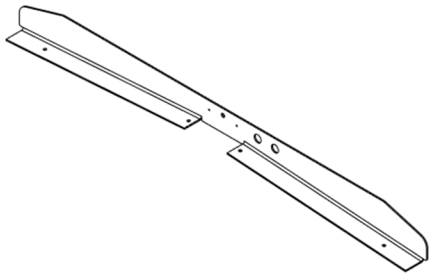
Canopy Bearing Rail

#180357

L- 96"

W- 2.875"



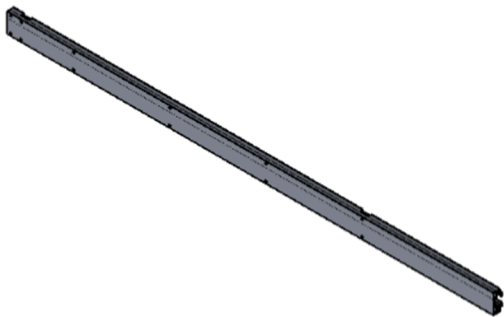


Express Savanna  
Canopy Front End

#180372

L- 47"

W- 3.75"

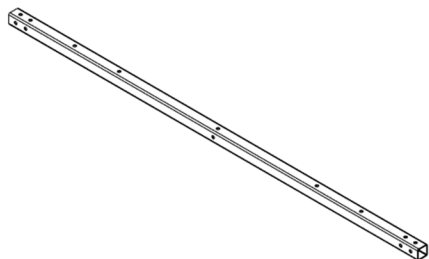


Express Savanna  
Canopy Sliding Rail

#180358

L- 96"

W- 3.875"



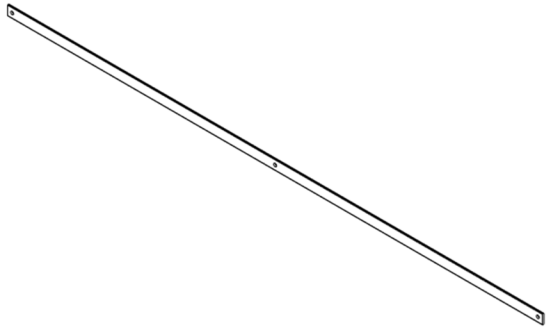
Express Savanna  
Cross Support

#180288

L- 51.821"

W- 1-1/4"

H- 1-1/4"



Express Savanna

Front Stabilizer

#180378

L- 68"

W- 1-1/4"

Thickness- 3/16"



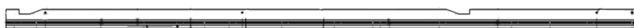
Express Savanna

Handle Connecting Rod

#180514

L- 20.875"

D- 0.188"



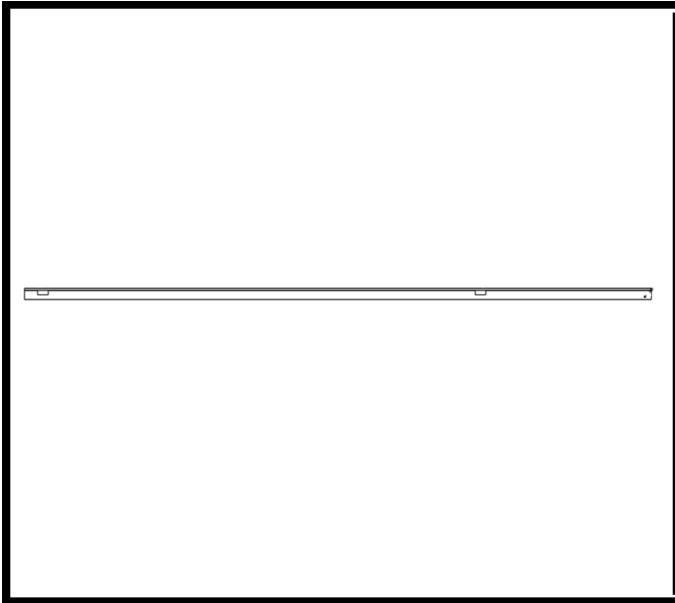
Express Savanna

Left Lower Bearing Rail

#180293

L- 96"

W- 2.875"



Express Savanna

Left Sliding Rail

#180294

L- 96"

W- 3.875"



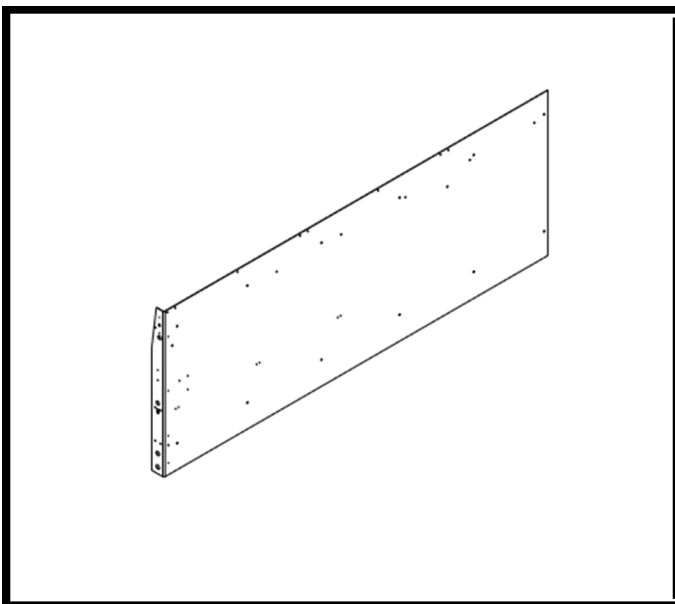
Express Savanna

Left Upper Bearing Rail

#180292

L- 96"

W- 2.875"



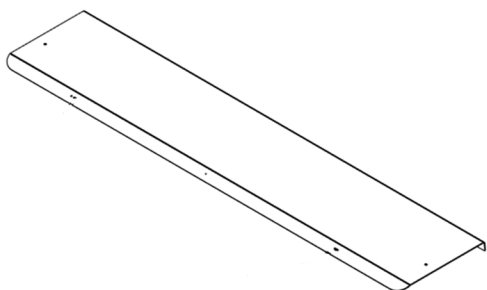
Express Savanna

Left Wall

#180365

L- 98.383"

W- 36.625"



Express Savanna

Left Wall Canopy

#180366

L- 74"

W- 15.645"



Express Savanna

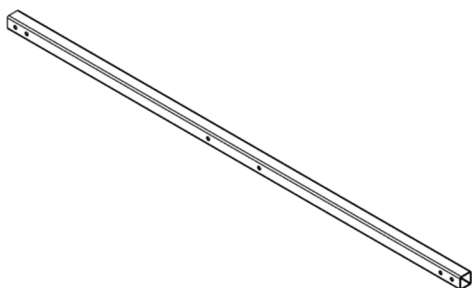
Left Wall Gear Rack

#180515

L- 69"

W- 0.7500"

H- 0.7500"



Express Savanna

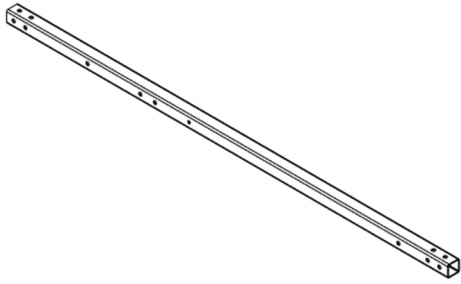
Lower Horizontal

#180291

L- 49-7/8"

W- 1-1/4"

H- 1-1/4"



Express Savanna

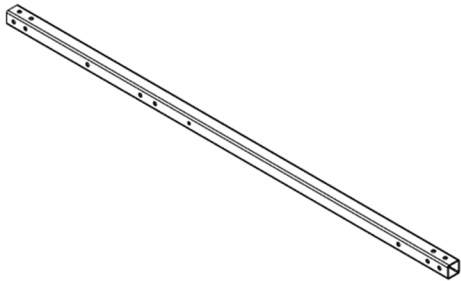
Main Upright

#180289

L- 47"

W- 1-1/4"

H- 1-1/4"



Express Savanna

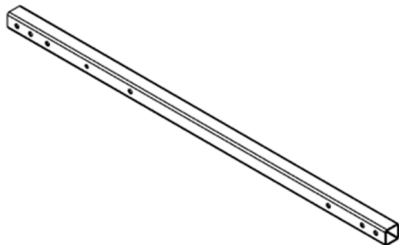
Main Upright-Canopy Option

#180375

L- 47"

W- 1-1/4"

H- 1-1/4"



Express Savanna

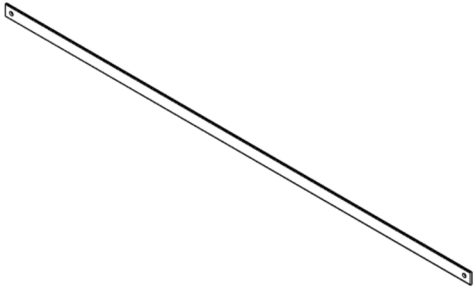
Mid Upright

#180290

L- 34-7/8"

W- 1-1/4"

H- 1-1/4"



Express Savanna

Rear Stabilizer

#180379

L- 52"

W- 1-1/4"

Thickness- 3/16"



Express Savanna

Right Lower Bearing Rail

#180296

L- 60"

W- 2.875"



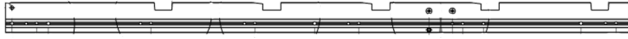
Express Savanna

Right Sliding Rail

#180297

L- 60"

W- 3.875"

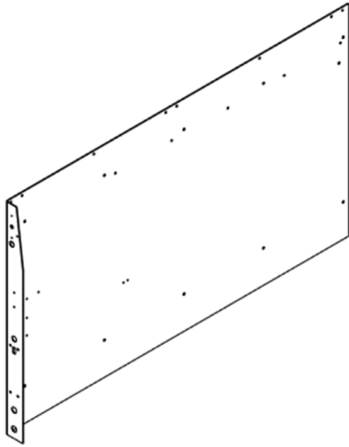


Express Savanna  
Right Upper Bearing Rail

#180295

L- 60"

W- 2.875"

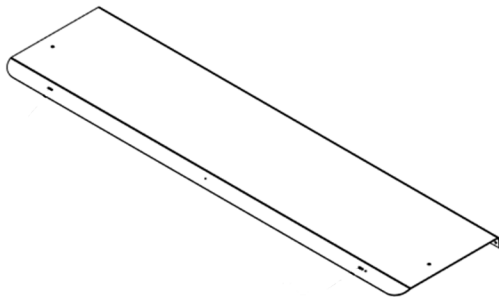


Express Savanna  
Right Wall Panel

#180367

L- 62.383"

W- 36.625"



Express Savanna  
Right Wall Canopy

#180368

L- 62"

W- 15.64"



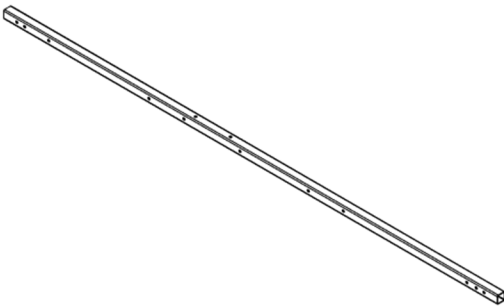
Express Savanna  
Left Wall Gear Rack

#180516

L- 44"

W- 0.7500"

H- 0.7500"



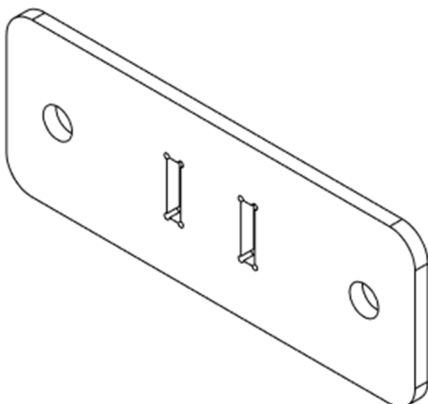
Express Savanna  
Upper Horizontal

#180287

L- 79-3/8"

W- 1-1/4"

H- 1-1/4"



Folding Ladder Rack

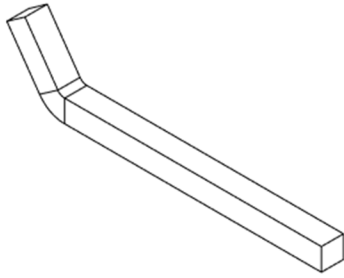
Base

#180481

L- 4"

W- 1.500"





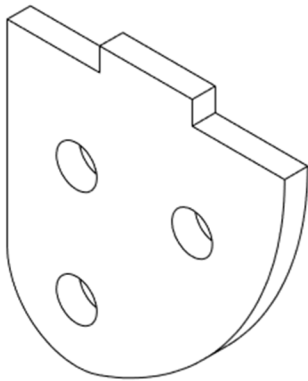
### Folding Ladder Rack

Hook 2

#180488

L- 7.500"

W- 0.500"



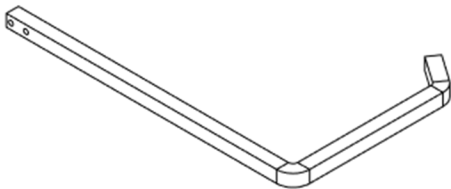
### Folding Ladder Rack

Pivot Plate

#180482

L- 1.540"

W- 1.500"



### Folding Ladder Rack

Main Hook

#180487

L- 11.895"

W- 7.537"