

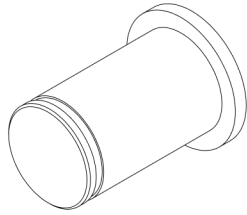
WALLSLIDE

WALLSLIDE PARTS CATALOG

MERCEDES METRIS

126" WHEEL BASE





CG1000XL, 1500XL, and 2200XL

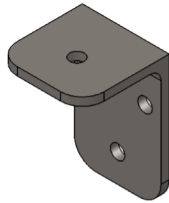
6201 Side Thrust

Bearing Pin

#030280

L-8.29"

D-0.470"



WS-Canopy

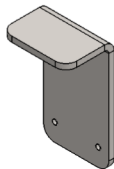
Bumper Mount

#180203

L- 2"

W- 3"

H- 2"



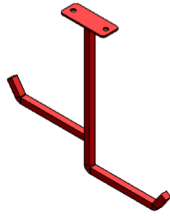
WS-Canopy

Bumper Stop

#180202

L-7"

W-3"



WS-Canopy

Ladder Rack

#180204

L- 4"

W-1-1/2"



WSF-4x6 inch

Base Foot Spacer

#180530

L- 4"

W- 1"



WSF-6 inch

Base Foot Spacer

#180529

L- 6"

W- 1"

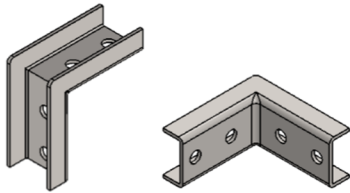


WSF-8 inch
Base Foot Spacer

#180528

L- 8"

W- 1"

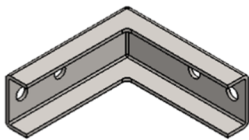


WSF- ClamShells
2 Way Inside Corner

#180151

L- 3.238"

W- 1.5"

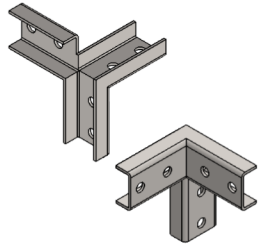


WSF- ClamShells
2 Way Outside Corner

#180150

L- 4"

W- 1.500"



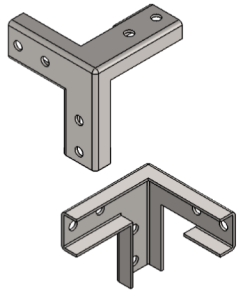
WSF- ClamShells

3 Way Inside Corner

#180153

L- 4"

W- 1.500"



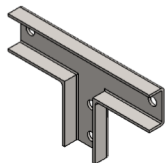
WSF- ClamShells

3 Way Outside Corner

#180152

L- 4"

W- 1.500"



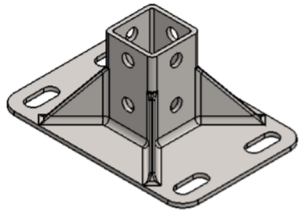
WSF- ClamShells

3 Way Tee

#180154

L- 6.500"

W- 4"



WSF- Frame

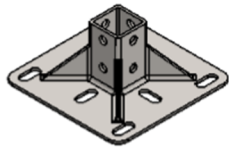
4x6 Base Foot

#180158

L- 4"

W- 6"

H- 2.625"



WSF- Frame

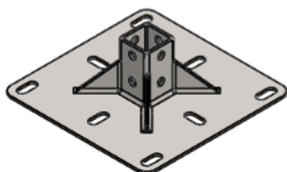
6x6 Base Foot

#180156

L- 6"

W- 6"

H- 2.625"



WSF- Frame

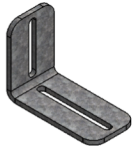
8x8 Base Foot

#180158

L- 8"

W- 8"

H- 2.625"



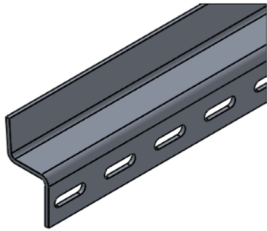
WSF-Frame
Unistrut Angle Bracket

#180206

L- 4"

W- 2"

H- 3"

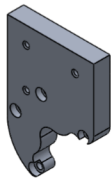


WS-Frame
Snake Track Extrusion

#180319

L-96"

W-1.380"

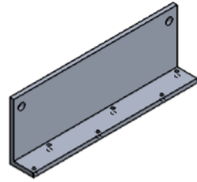


WSM-Bearing Rail
Motor Mount

#180179

L-5.554"

W-3.976"

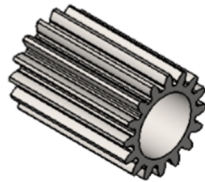


WSM-Bearing Rails
Limit Switch Mount

#180218

L- 5.125"

W- 1.800"

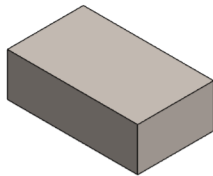


WSM-Motor
Motor Pinion Gear

#180320

L- 1-1/2"

D- 3/4"



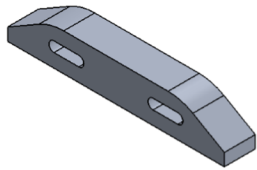
WSR-Rails
Latch Rod Paddle

#180313

L-1-1/2"

W-7/8"

H-1/2"



WSM-Rails
Limit Switch Striker

#180219

L- 4.375"

W- 0.625"

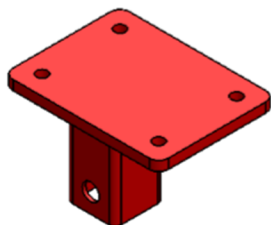


WSP-Acuator
Connecting Rod

#180518

L- 9.8"

W- 0.188"



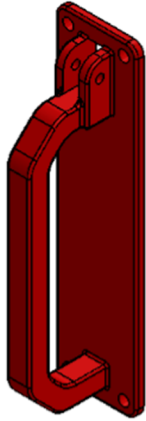
WSP-Canopy
Handle Bracket

#180214

L- 4"

W- 3"

H- 2"



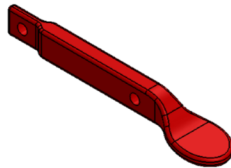
WSP-Handle

Latch Handle Pull

#180317

L- 8"

W- 2"



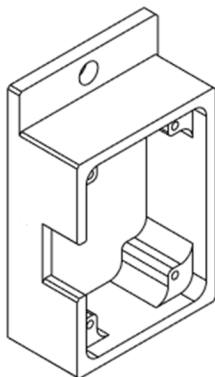
WSP-Handle

Thumb Lever

#180318

L- 4.438"

W- 0.500"



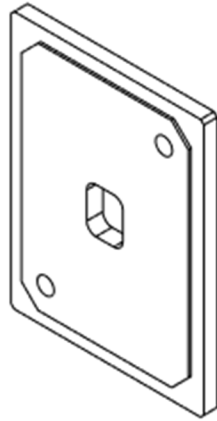
WSP-JSNSR04T

Enclosure Housing

#180330

L- 2.375"

W- 0.750"



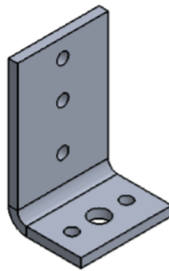
WSP-JSNSR04T

Enclosure Lid

#180331

L- 2"

W- 1.5"



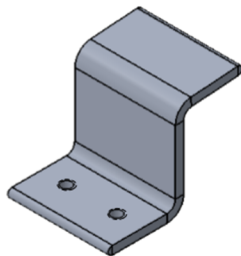
WSP-Snake Track

End Support Bracket

#180216

L- 2"

W- 1.250"



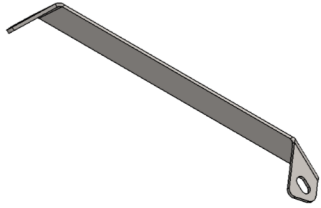
WSP-Snake Track

Single Support

#180314

L- 1.500"

W- 1.500"



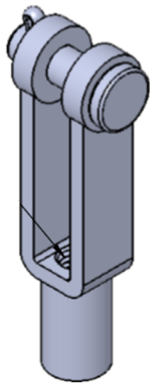
WSP-Wall Sheet

Canopy Bracket

#180205

L- 14.750"

W- 1"



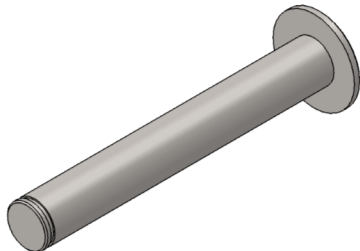
WSP-Wall Sheet

Clevis Rod End

#180322

L- 1.563"

W- 0.438"



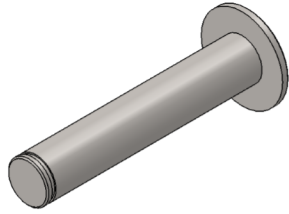
WSR-Bearing Rails

HD Main Bearing Pin

#180193

L- 2.207"

D- 0.310"

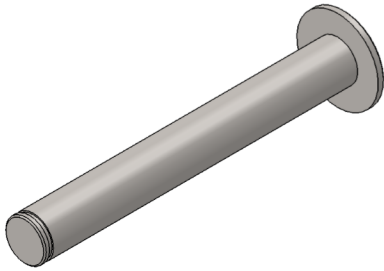


WSR-Bearing Rails-HD
Single Thrust Bearing Pin

#180196

L- 1.647"

W- 0.310"

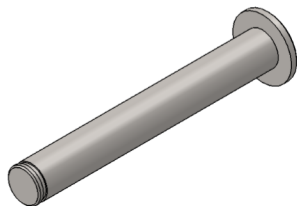


WSR-Bearing Rails
HD Thrust Bearing Pin

#180194

L- 2.402"

W- 0.310"

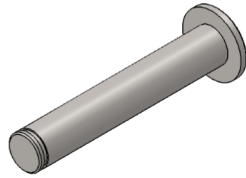


WSR-Bearing Rails
Main Bearing Pin

#180191

L- 1.835"

D- 0.248"

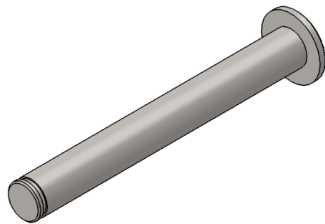


WSR-Bearing Rails
Single Thrust Bearing Pin

#180195

L- 1.441"

W- 0.248"

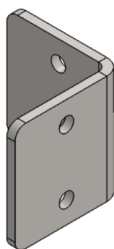


WSR-Bearing Rails
Thrust Bearing Pin

#180192

L- 2.055"

D- 0.248"

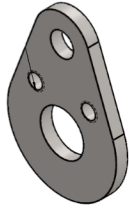


WSR-Rails
Closure Stop

#180215

L- 2.5"

W- 2.492"



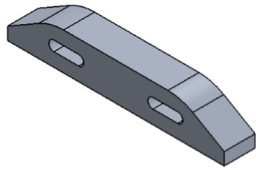
WSR-Rails

Cranklink

#180211

L- 1.821"

W- 0.125"



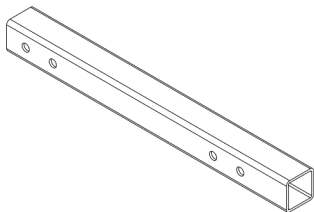
WSM-Rails

Limit Switch Striker

#180219

L- 4.375"

W- 0.625"



WSF-Metris

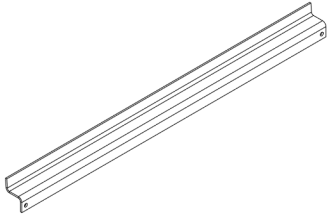
Bulkhead Extension

#180149

L- 12.875"

W- 1-1/4"

H- 1-1/4"



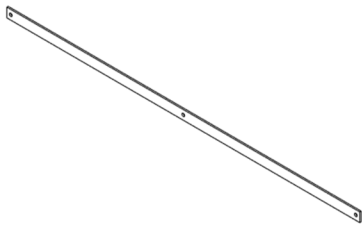
WSF-Metris

Bulkhead Snake Track Support

#180655

L- 28"

W- 2"



WSF-Metris

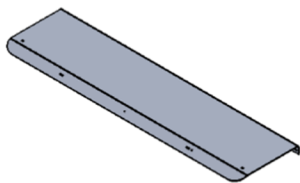
Bulkhead Stabilizer

#180542

L- 48"

W- 1-1/4"

Thickness- 3/16"



WSF-Metris

Bulkhead Wall Canopy

#180328

L- 45"

W- 11.645"



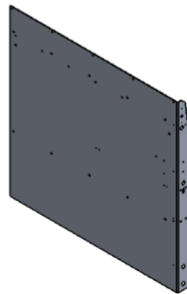
WSF-Metris

Bulkhead Wall Gear Rack

#180543

L- 32"

W- 0.7500"



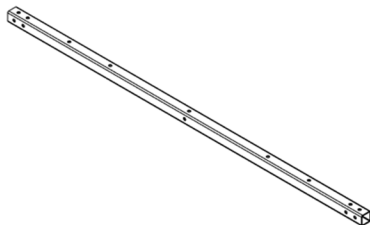
WSF-Metris

Bulkhead Wall Panel

#180327

L- 45.516"

W- 44.750"



WSF-Metris

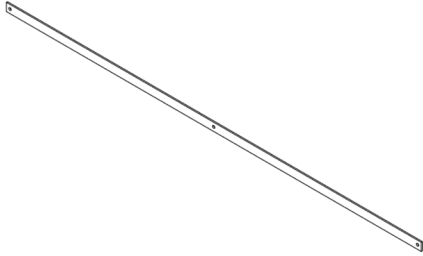
Cross Support

#180144

L- 48.500"

W- 1-1/4"

H- 1-1/4"



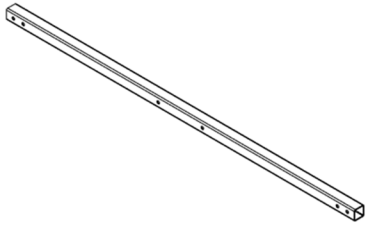
WSF-Metris
Front Stabilizer
#180524
L- 65-1/2"
W- 1-1/4"
Thickness- 3/16"



WSP-Metris
Handle Connecting Rod
#180544
L- 18.625"
D- 3/16"



WSF-Metris
Left Wall Gear Rack
#180227
L- 62"
W- 0.7500"



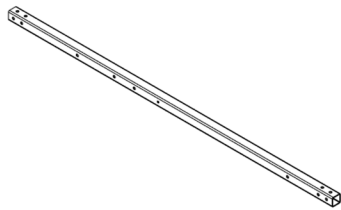
WSF-Metris
Lower Horizontal

#180148

L- 44.313"

W- 1-1/4"

H- 1-1/4"



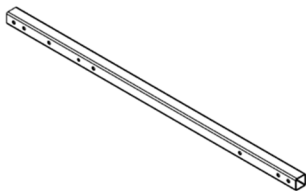
WSF-Metris
Main Upright

#180146

L- 49.375"

W- 1-1/4"

H- 1-1/4"



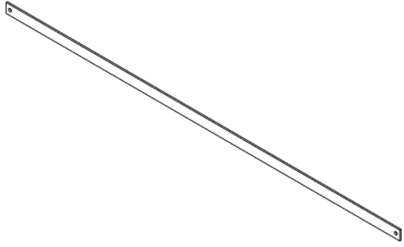
WSF-Metris
Mid Upright

#180522

L- 35-3/8"

W- 1-1/4"

H- 1-1/4"



WSF-Metris

Rear Stabilizer

#180523

L- 52-1/2"

W- 1-1/4"

Thickness- 3/16"



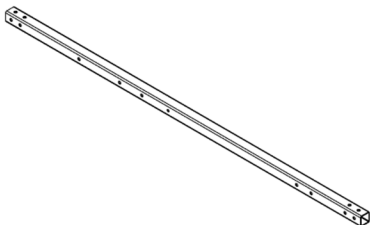
WSF-Metris

Right Wall Gear Rack

#180228

L- 36"

W- 0.7500"



WSF-Metris

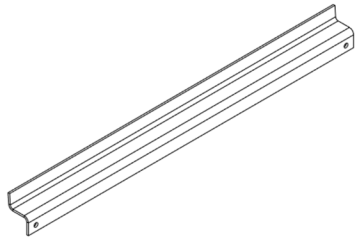
Short Upright

#180145

L- 49"

W- 1-1/4"

H- 1-1/4"

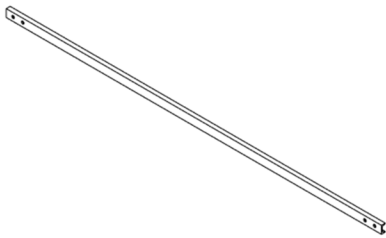


WSF-Metris
Snake Track Support

#180654

L- 24"

W- 2"



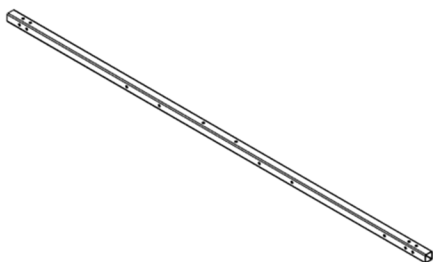
WSF-Metris
Spreader Bar

#180660

L- 48.500"

W- 1/2"

H- 1"



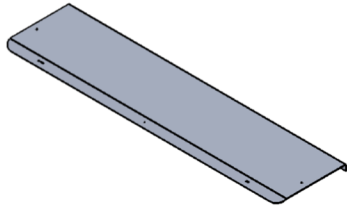
WSF-Metris
Upper Horizontal

#180143

L- 72"

W- 1-1/4"

H- 1-1/4"



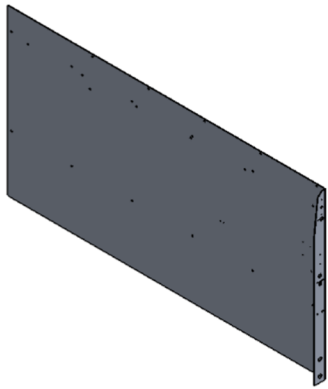
WSP-Metris

Left Wall Canopy

#180189

L- 65"

W- 15.895"



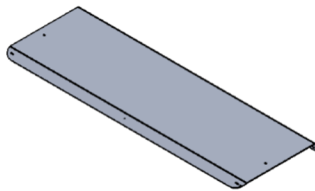
WSP-Metris

Left Wall Panel

#180190

L- 86.391"

W- 44.750"



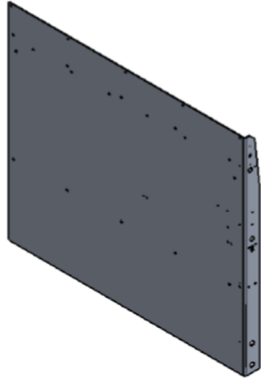
WSP-Metris

Right Wall Canopy

#180184

L- 50.750"

W- 16.645"



WSP-Metris

Right Wall Panel

#180225

L- 51.266"

W- 44.750"



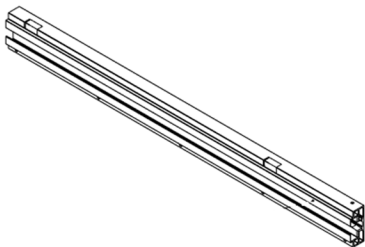
WSR-Metris

Bulkhead Lower Bearing Rail

#180325

L- 43.250"

W- 2.875"



WSR-Metris

Bulkhead Sliding Rail

#180326

L- 43.250"

W- 3.875"



WSR-Metris

Bulkhead Upper Bearing Rail

#180324

L- 43.250"

W- 2.875"



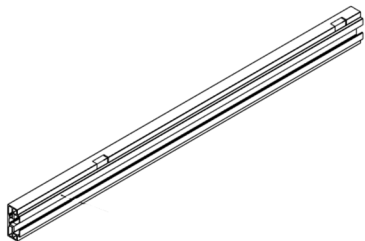
WSR-Metris

Canopy Bearing Rail

#180526

L- 49"

W- 2.875"



WSR-Metris

Canopy Sliding Rail

#180527

L- 49"

W- 3.875"

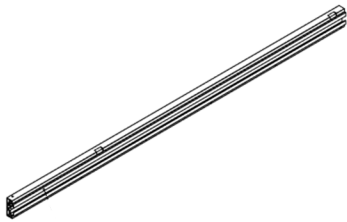


WSR-Metris
Left Lower Bearing Rail

#180223

L- 84"

W- 2.875"



WSR-Metris
Left Sliding Rail

#180170

L- 84"

W- 3.875"

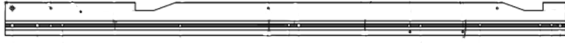


WSR-Metris
Left Upper Bearing Rail

#180222

L- 84"

W- 2.875"

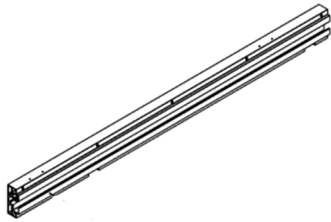


WSR-Metris
Right Lower Bearing Rail

#180224

L- 49"

W- 2.875"



WSR-Metris
Right Sliding Rail

#180172

L- 49"

W- 3.875"

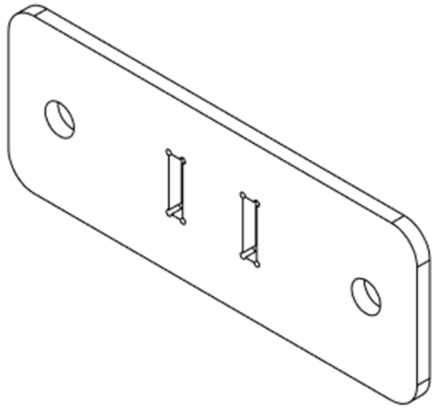


WSR-Metris
Right Upper Bearing Rail

#180171

L- 49"

W- 2.875"



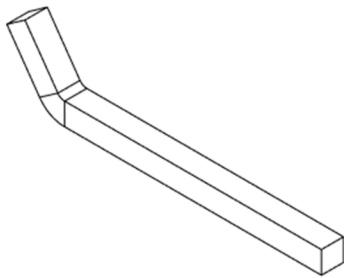
Folding Ladder Rack

Base

#180481

L- 4"

W- 1.500"



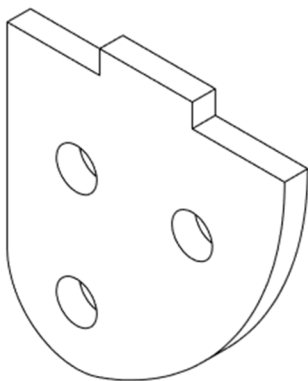
Folding Ladder Rack

Hook 2

#180488

L- 7.500"

W- 0.500"



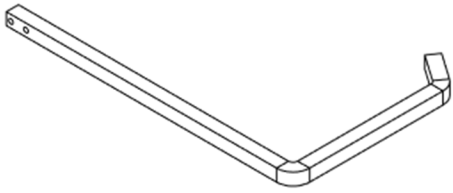
Folding Ladder Rack

Pivot Plate

#180482

L- 1.540"

W- 1.500"



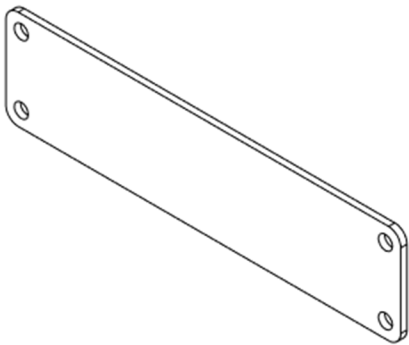
Folding Ladder Rack

Main Hook

#180487

L- 11.895"

W- 7.537"



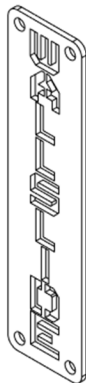
Logo Plate

Back Plate

#180504

L- 8"

W- 2"



WallSlide Vertical

Logo Plate

#180532

L- 8"

W- 2"