

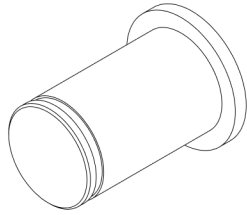
WALLSLIDE

WALLSLIDE PARTS CATALOG

MERCEDES METRIS

126" WHEEL BASE





CG1000XL, 1500XL, and 2200XL

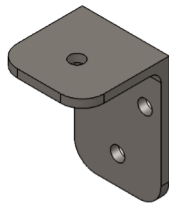
6201 Side Thrust

Bearing Pin

#030280

L-8.29"

D-0.470"



WS-Canopy

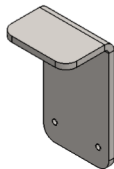
Bumper Mount

#180203

L- 2"

W- 3"

H- 2"



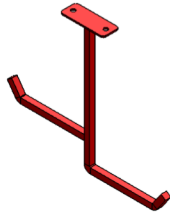
WS-Canopy

Bumper Stop

#180202

L-7"

W-3"



WS-Canopy

Ladder Rack

#180204

L- 4"

W-1-1/2"



WSF-4x6 inch

Base Foot Spacer

#180530

L- 4"

W- 1"



WSF-6 inch

Base Foot Spacer

#180529

L- 6"

W- 1"

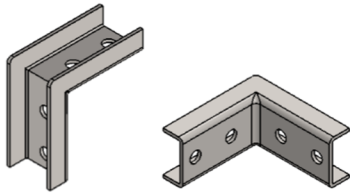


WSF-8 inch
Base Foot Spacer

#180528

L- 8"

W- 1"

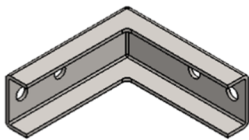


WSF- ClamShells
2 Way Inside Corner

#180151

L- 3.238"

W- 1.5"

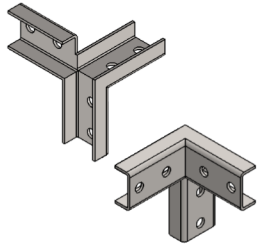


WSF- ClamShells
2 Way Outside Corner

#180150

L- 4"

W- 1.500"



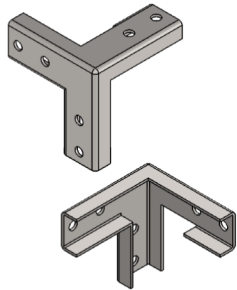
WSF- ClamShells

3 Way Inside Corner

#180153

L- 4"

W- 1.500"



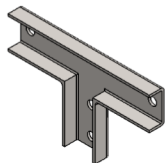
WSF- ClamShells

3 Way Outside Corner

#180152

L- 4"

W- 1.500"



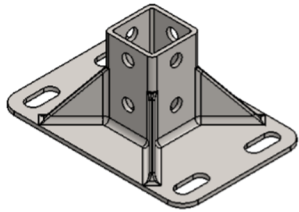
WSF- ClamShells

3 Way Tee

#180154

L- 6.500"

W- 4"



WSF- Frame

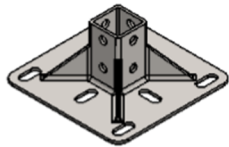
4x6 Base Foot

#180158

L- 4"

W- 6"

H- 2.625"



WSF- Frame

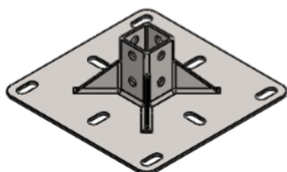
6x6 Base Foot

#180156

L- 6"

W- 6"

H- 2.625"



WSF- Frame

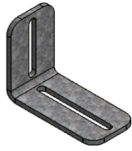
8x8 Base Foot

#180158

L- 8"

W- 8"

H- 2.625"



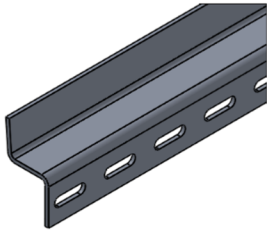
WSF-Frame
Unistrut Angle Bracket

#180206

L- 4"

W- 2"

H- 3"

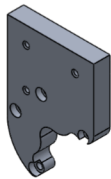


WS-Frame
Snake Track Extrusion

#180319

L-96"

W-1.380"

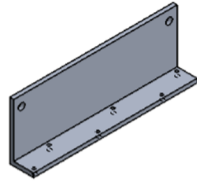


WSM-Bearing Rail
Motor Mount

#180179

L-5.554"

W-3.976"

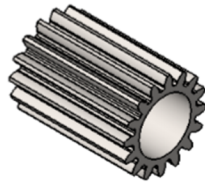


WSM-Bearing Rails
Limit Switch Mount

#180218

L- 5.125"

W- 1.800"

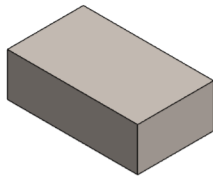


WSM-Motor
Motor Pinion Gear

#180320

L- 1-1/2"

D- 3/4"



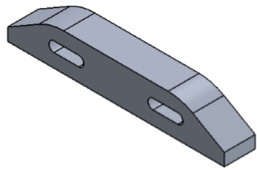
WSR-Rails
Latch Rod Paddle

#180313

L-1-1/2"

W-7/8"

H-1/2"



WSM-Rails
Limit Switch Striker

#180219

L- 4.375"

W- 0.625"

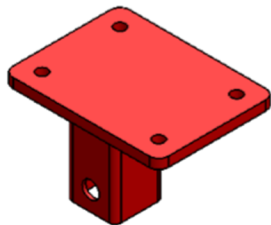


WSP-Acuator
Connecting Rod

#180518

L- 9.8"

W- 0.188"



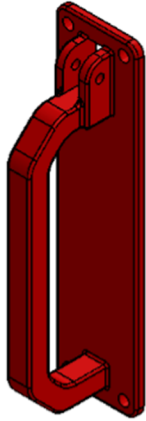
WSP-Canopy
Handle Bracket

#180214

L- 4"

W- 3"

H- 2"



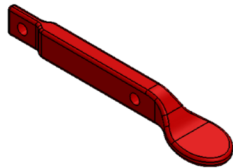
WSP-Handle

Latch Handle Pull

#180317

L- 8"

W- 2"



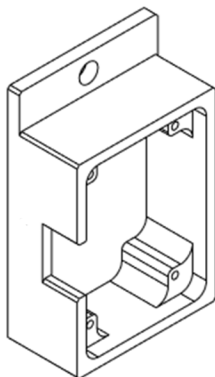
WSP-Handle

Thumb Lever

#180318

L- 4.438"

W- 0.500"



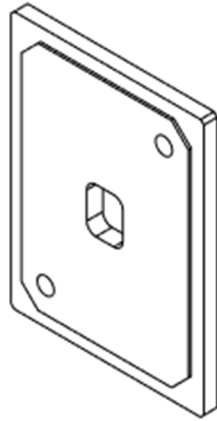
WSP-JSNSR04T

Enclosure Housing

#180330

L- 2.375"

W- 0.750"



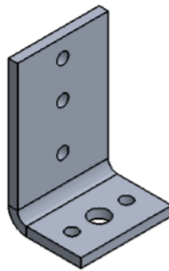
WSP-JSNSR04T

Enclosure Lid

#180331

L- 2"

W- 1.5"



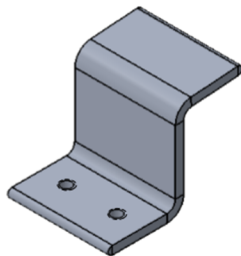
WSP-Snake Track

End Support Bracket

#180216

L- 2"

W- 1.250"



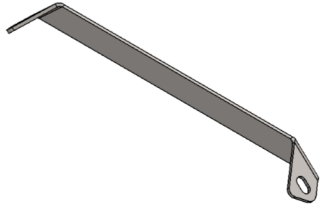
WSP-Snake Track

Single Support

#180314

L- 1.500"

W- 1.500"



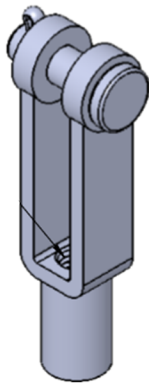
WSP-Wall Sheet

Canopy Bracket

#180205

L- 14.750"

W- 1"



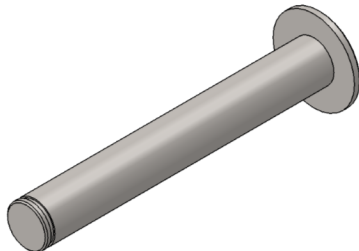
WSP-Wall Sheet

Clevis Rod End

#180322

L- 1.563"

W- 0.438"



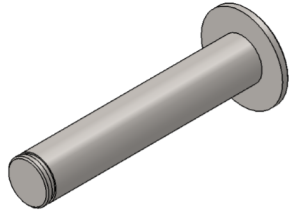
WSR-Bearing Rails

HD Main Bearing Pin

#180193

L- 2.207"

D- 0.310"

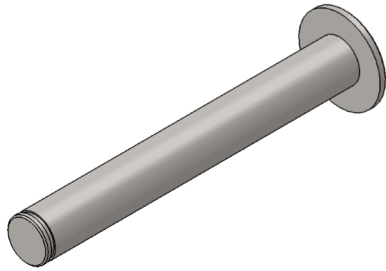


WSR-Bearing Rails-HD
Single Thrust Bearing Pin

#180196

L- 1.647"

W- 0.310"

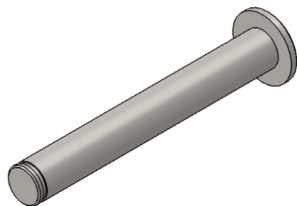


WSR-Bearing Rails
HD Thrust Bearing Pin

#180194

L- 2.402"

W- 0.310"

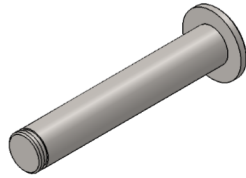


WSR-Bearing Rails
Main Bearing Pin

#180191

L- 1.835"

D- 0.248"

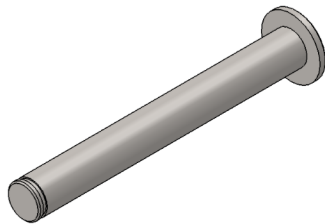


WSR-Bearing Rails
Single Thrust Bearing Pin

#180195

L- 1.441"

W- 0.248"

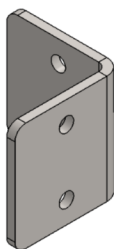


WSR-Bearing Rails
Thrust Bearing Pin

#180192

L- 2.055"

D- 0.248"

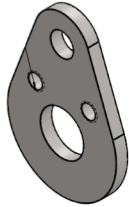


WSR-Rails
Closure Stop

#180215

L- 2.5"

W- 2.492"



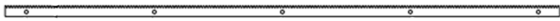
WSR-Rails

Cranklink

#180211

L- 1.821"

W- 0.125"



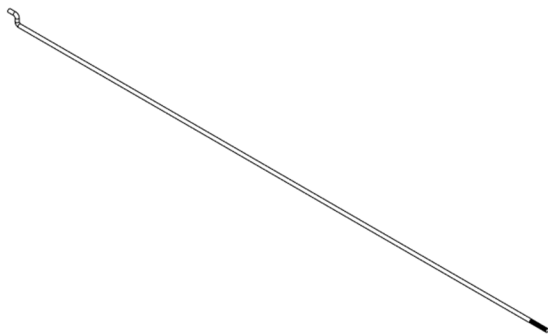
Promaster 136 WB

Bulkhead Wall Gear Rack

#180534

L- 39"

W- 0.750"



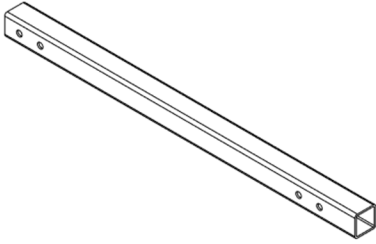
Promaster 136 WB

Handle Connecting Rod

#180535

L- 33"

D- 3/16"



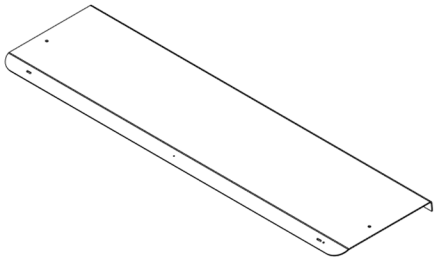
Promaster 136 WB
Bulkhead Extension

#180525

L- 21"

W- 1-1/4"

H- 1-1/4"

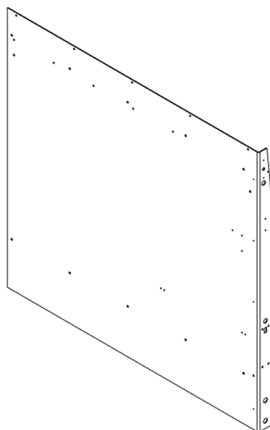


Promaster 136 WB
Bulkhead Wall Canopy

#180476

L- 56.500"

W- 15.645"

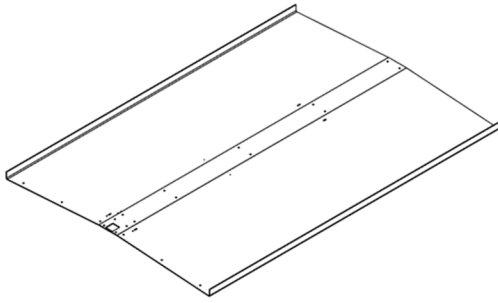


Promaster 136 WB
Bulkhead Wall Panel

#180475

L- 54.750"

W- 56.891"



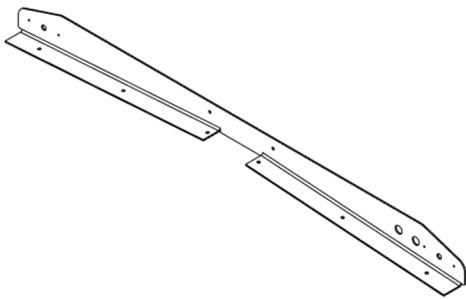
Promaster 136 WB

Canopy

#180477

L- 73.875"

W- 52"



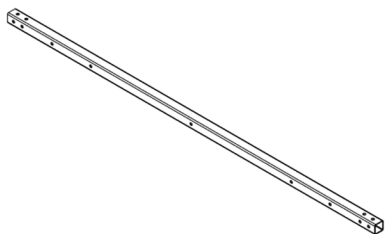
Promaster 136 WB

Canopy Front End

#180478

L- 52"

W- 2.105"



Promaster 136 WB

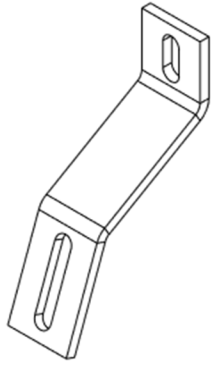
Cross Support

#180453

L- 53.321"

W- 1-1/4"

H- 0.090"



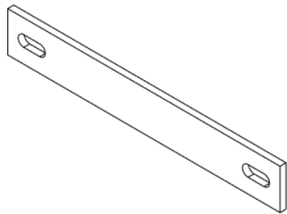
Promaster 136 WB
Frame Angled Mounting Strap

#180539

L- 4.508"

W- 1.250"

Thickness- 0.188"



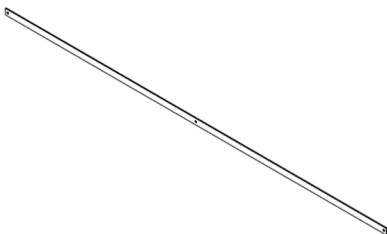
Promaster 136 WB
Frame Mounting Strap

#180538

L- 8.500"

W- 1-1/4"

Thickness- 3/16"



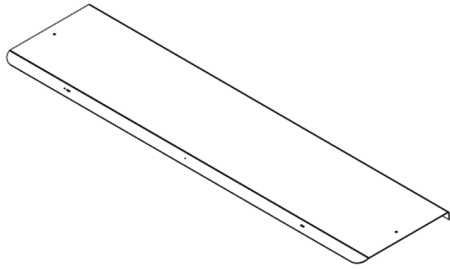
Promaster 136 WB
Front Stabilizer

#180537

L- 84.500"

W- 1-1/4"

Thickness- 3/16"



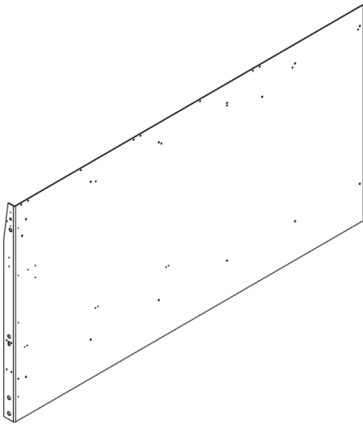
Promaster 136 WB

Left Wall Canopy

#180470

L- 74"

W- 18.393"



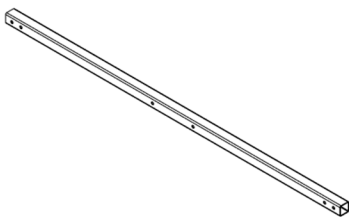
Promaster 136 WB

Left Wall Panel

#180469

L- 102.391"

W- 54.750"



Promaster 136 WB

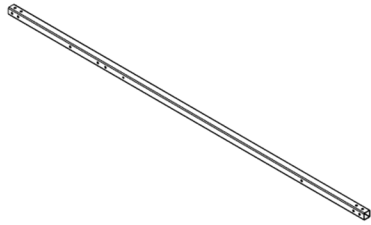
Lower Horizontal

#180454

L- 46-3/8"

W- 1-1/4"

H- 1-1/4"



Promaster 136 WB

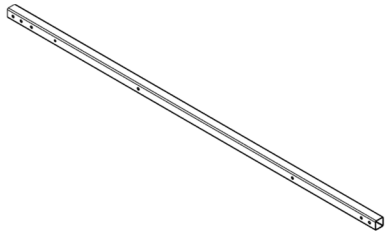
Main Upright

#180451

L- 72-1/2"

W- 1-1/4"

H- 1-1/4"



Promaster 136 WB

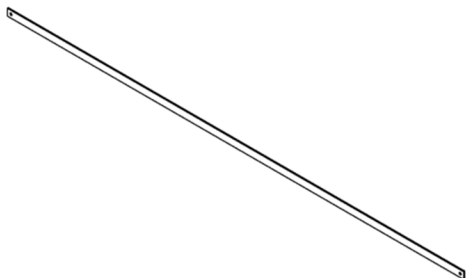
Mid Upright

#180452

L- 56-3/8"

W- 1-1/4"

H- 1-1/4"



Promaster 136 WB

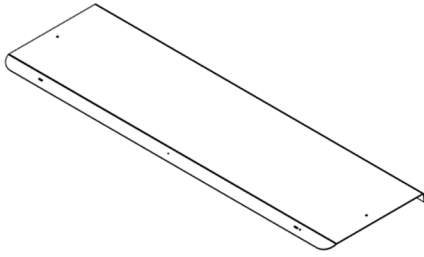
Rear Stabilizer

#180536

L- 78"

W- 1-1/4"

Thickness- 3/16"



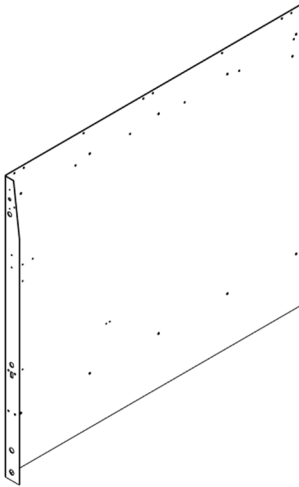
Promaster 136 WB

Right Wall Canopy

#180473

L- 61.875"

W- 18.393"



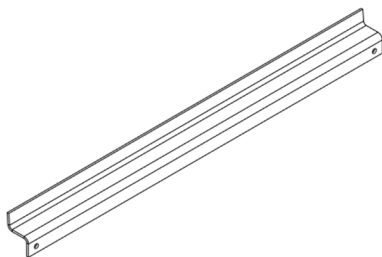
Promaster 136 WB

Right Wall Panel

#180472

L- 62.391"

W- 54.750"



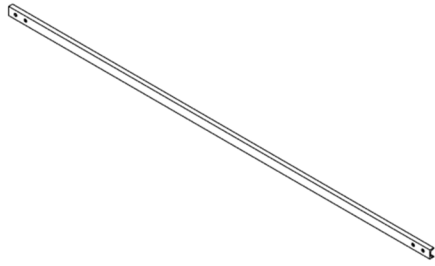
Promaster 136 WB

Snake Track Support

#180653

L- 25"

W- 3.113"



Promaster 136 WB
Spreader Bar

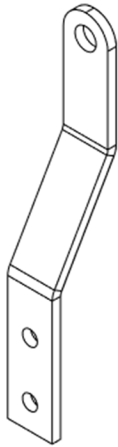
#180659

L- 53.321"

W- 1"

H- 1/2"

Thickness- 1/8"

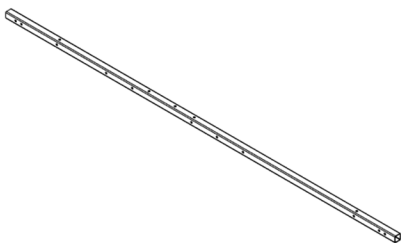


Promaster 136 WB
Upper Bearing Guide Bracket

#180521

L- 7"

W- 1"



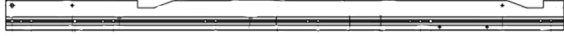
Promaster 136 WB
Upper Horizontal

#180450

L- 83-13/16"

W- 1-1/4"

H- 1-1/4"



Promaster 136 WB
Bulkhead Lower Bearing Rail

#180464

L- 54.500"

W- 2.875"

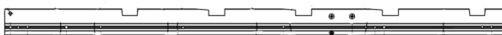


Promaster 136 WB
Bulkhead Sliding Rail

#180465

L- 54.500"

W- 3.875"



Promaster 136 WB
Bulkhead Upper Bearing Rail

#180463

L- 54.500"

W- 2.875"

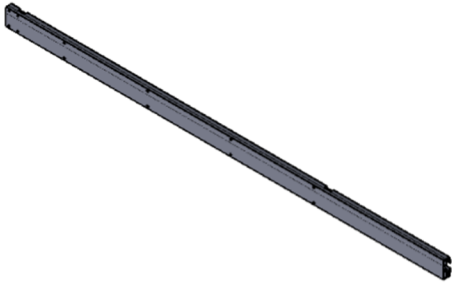


Promaster 136 WB
Canopy Bearing Rail

#180467

L- 100"

W- 2.875"



Promaster 136 WB
Canopy Sliding Rail

#180468

L- 100"

W- 3.875"



Promaster 136 WB
Left Lower Bearing Rail

#180456

L- 100"

W- 3.875"



Promaster 136 WB

Left Sliding Rail

#180457

L- 100"

W- 3.875"



Promaster 136 WB

Left Upper Bearing Rail

#180455

L- 100"

W- 2.875"



Promaster 136 WB

Right Lower Bearing Rail

#180460

L- 60"

W- 2.875"



Promaster 136 WB

Right Sliding Rail

#180461

L- 60"

W- 3.875"



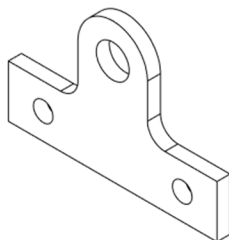
Promaster 136 WB

Right Upper Bearing Rail

#180459

L- 60"

W- 2.875"



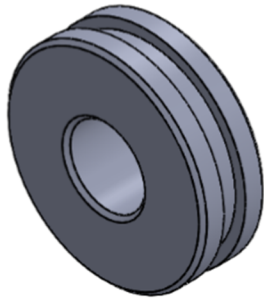
Canopy

Bearing Bracket

#180507

L- 3"

W- 2"



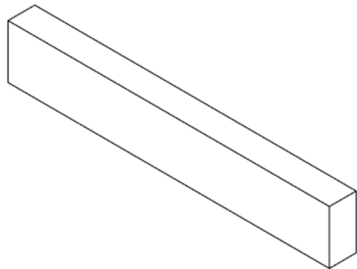
Canopy

Guide Bearing

#180508

H- 0.400"

D- 1.250"



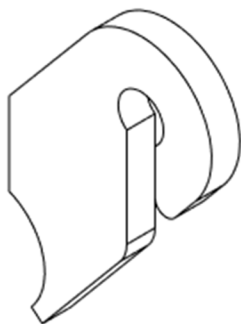
Canopy

Latch Handle Rod Tab

#180501

L- 2.250"

W- 0.375"



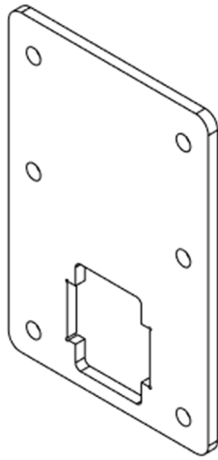
Canopy

Latch Spring Tab

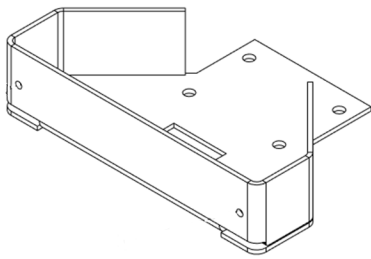
#180500

L- 1.318"

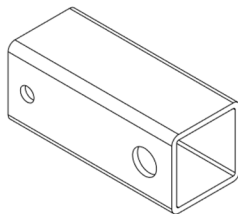
W- 0.894"



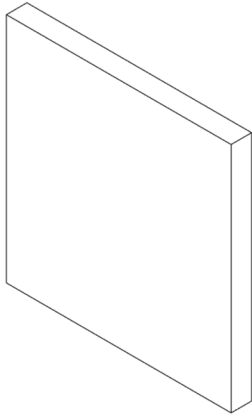
Canopy
Latch Base
#180483
L- 5.875"
W- 4"



Canopy
Latch Pin Cover
#180541
L- 8.500"
W- 6.125"



Canopy
Latch Handle Adapter Tube
#180485
L- 3"
W- 1-1/4"



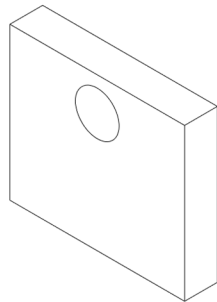
Canopy

Latch Lift Plate

#180486

L- 2.058"

W- 2.125"



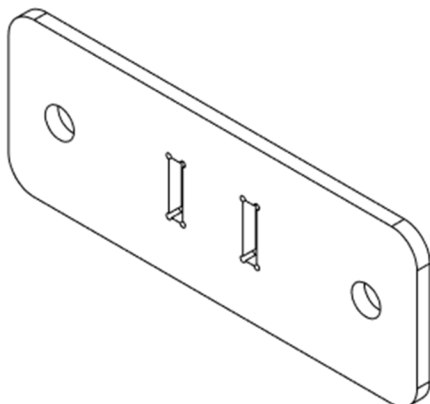
Canopy

Latch Pin Tab

#180484

L- 1"

W- 0.870"



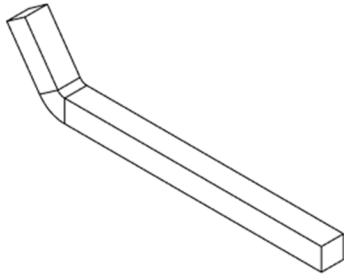
Folding Ladder Rack

Base

#180481

L- 4"

W- 1.500"



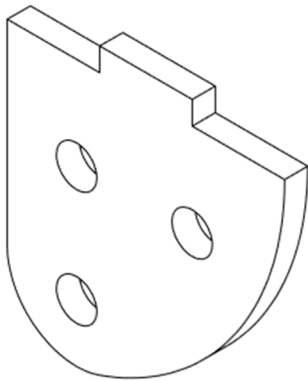
Folding Ladder Rack

Hook 2

#180488

L- 7.500"

W- 0.500"



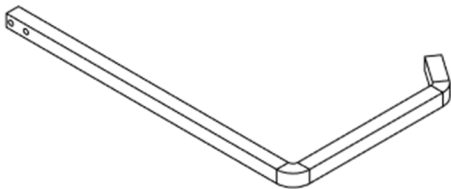
Folding Ladder Rack

Pivot Plate

#180482

L- 1.540"

W- 1.500"



Folding Ladder Rack

Main Hook

#180487

L- 11.895"

W- 7.537"